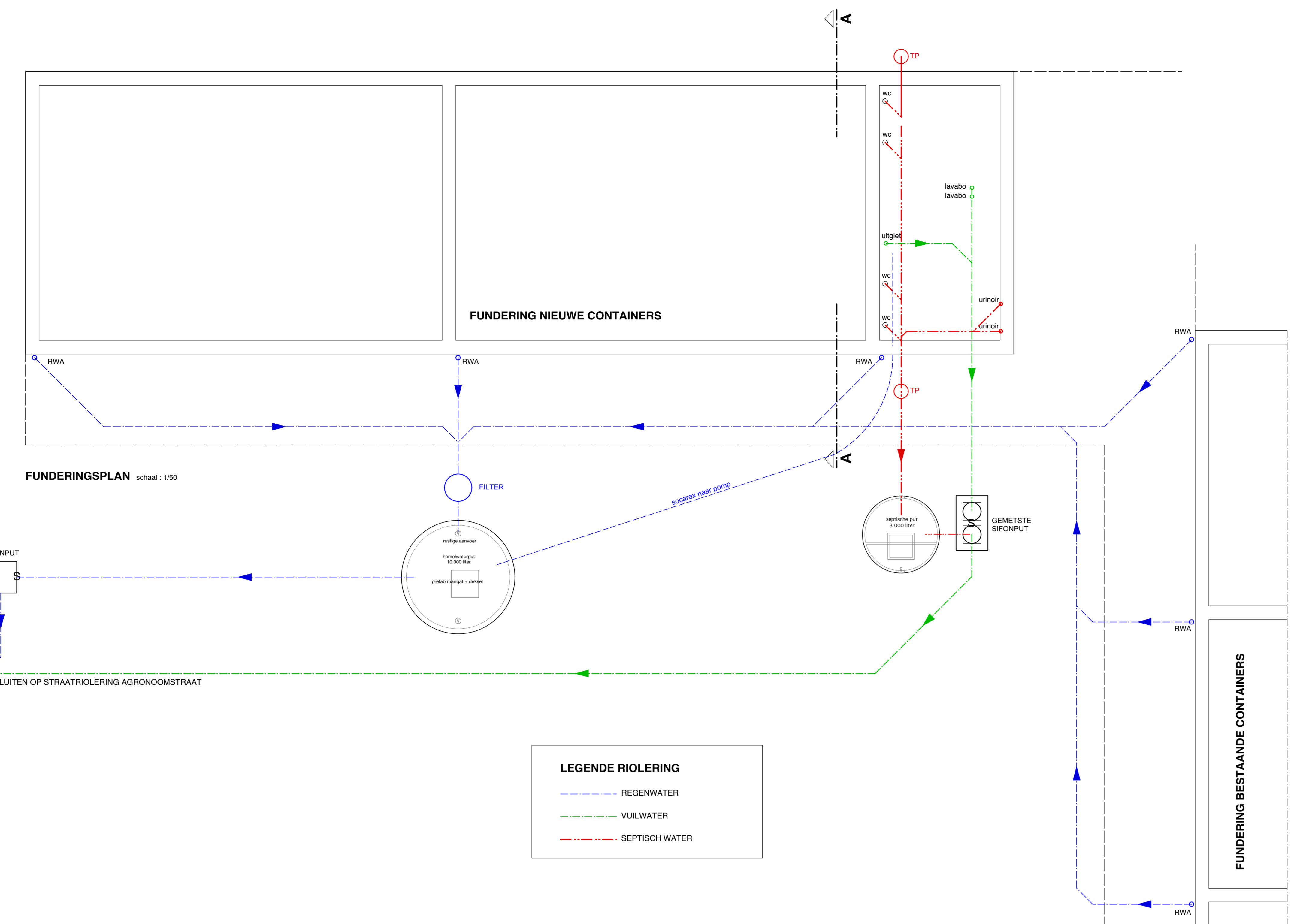


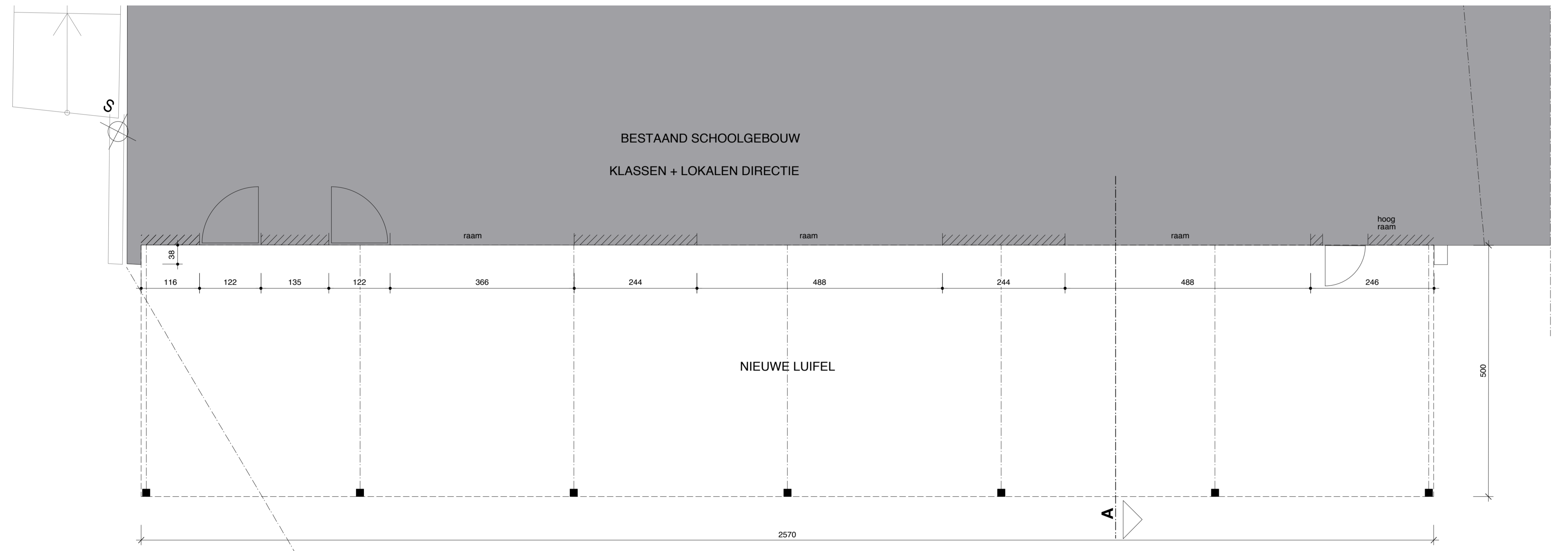
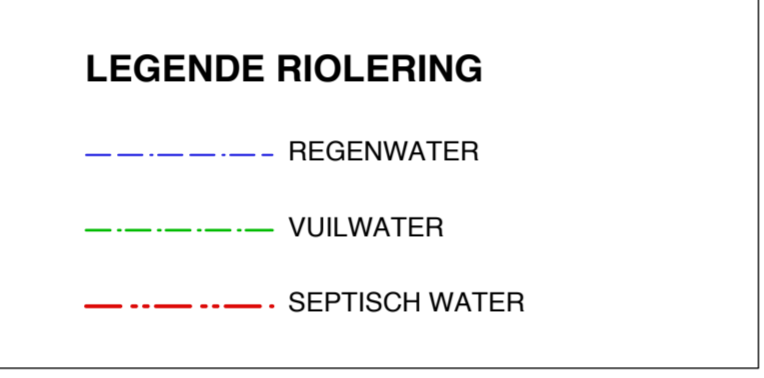
OMGEVINGSPLAN schaal 1:2500



LIGGINGSPLAN schaal 1:10000



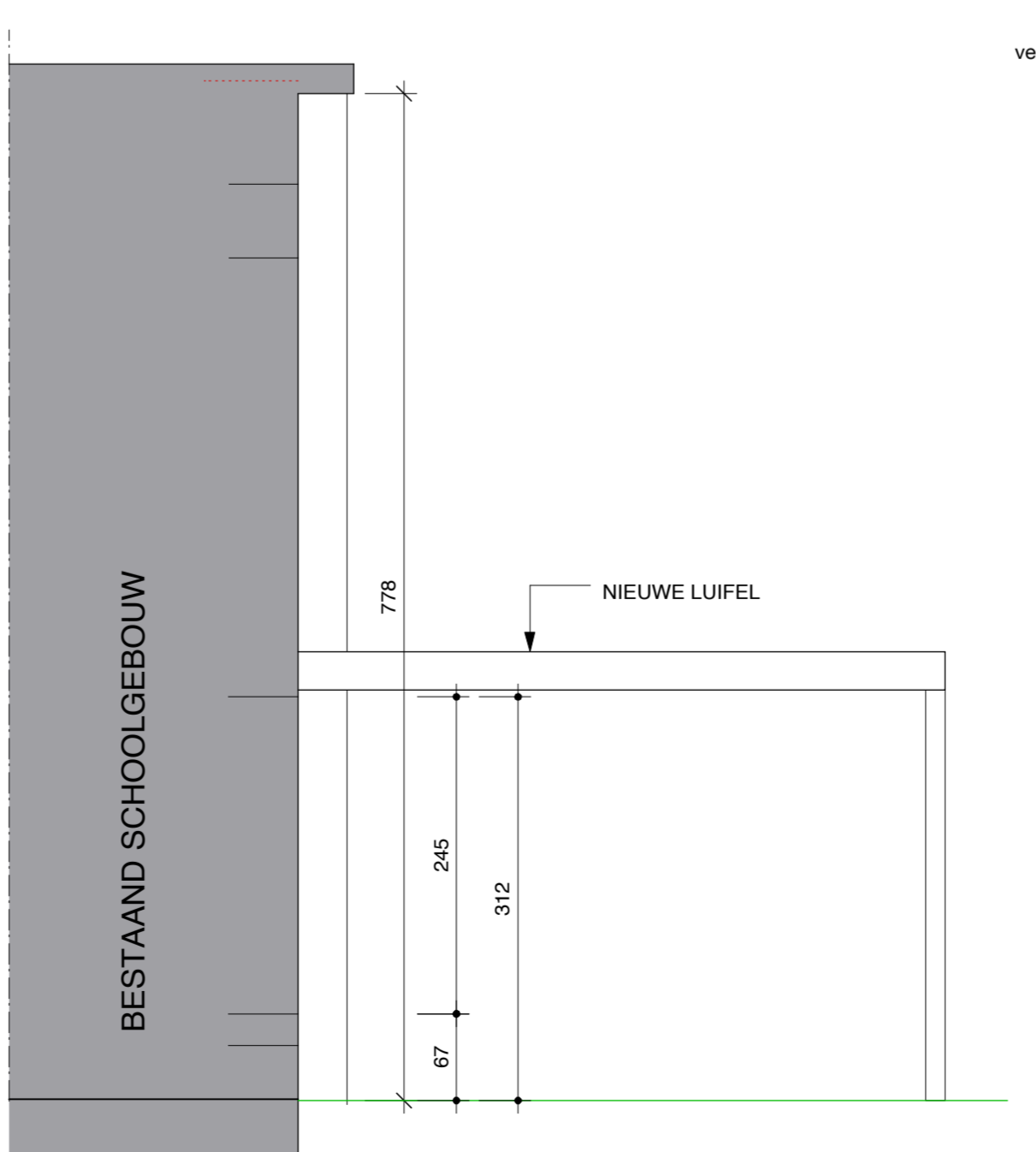
FUNDINGSPLAN schaal 1:100



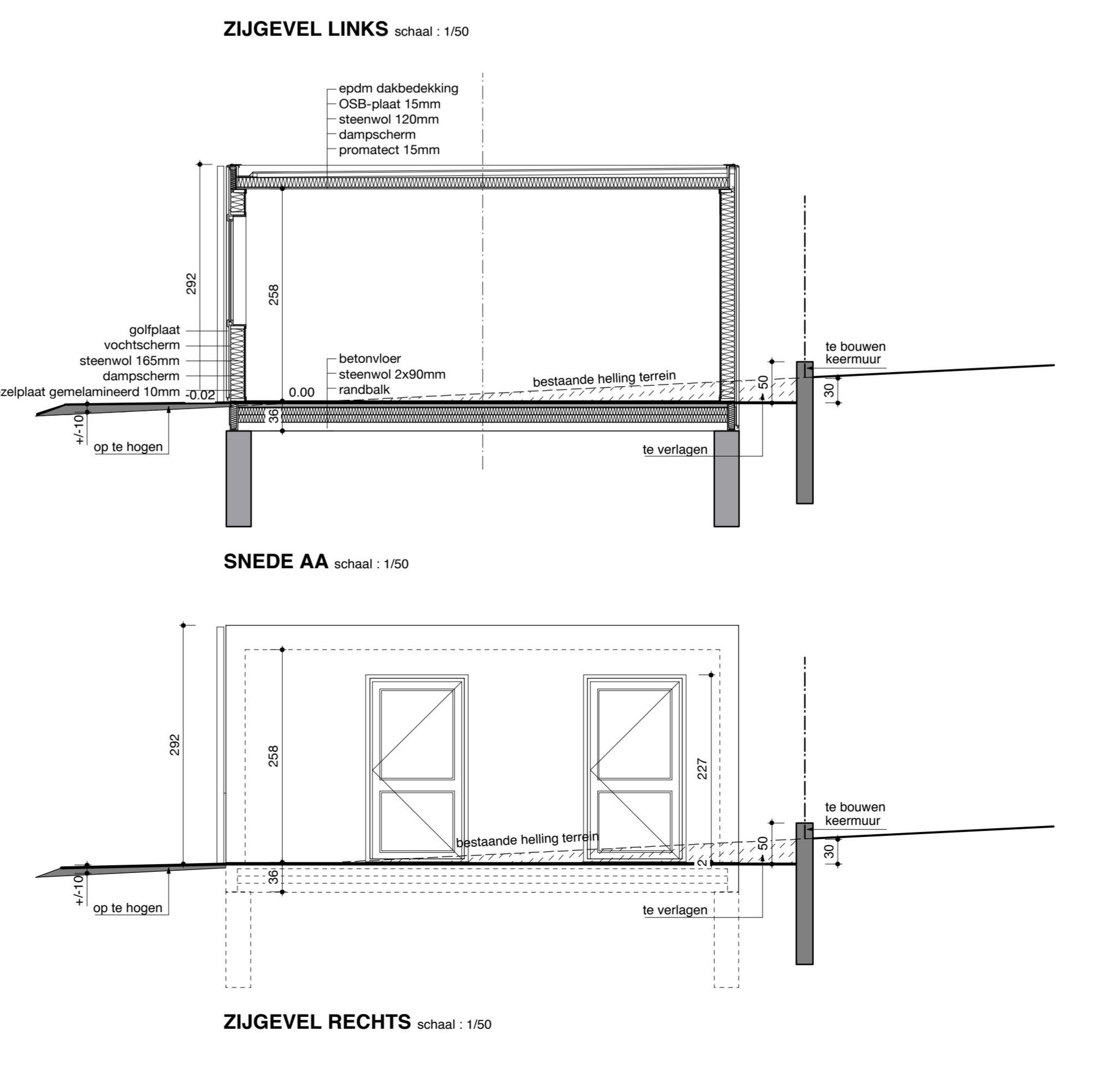
GRONDPLAN LUIFEL schaal 1:1000



AANZICHT LUIFEL schaal 1:100



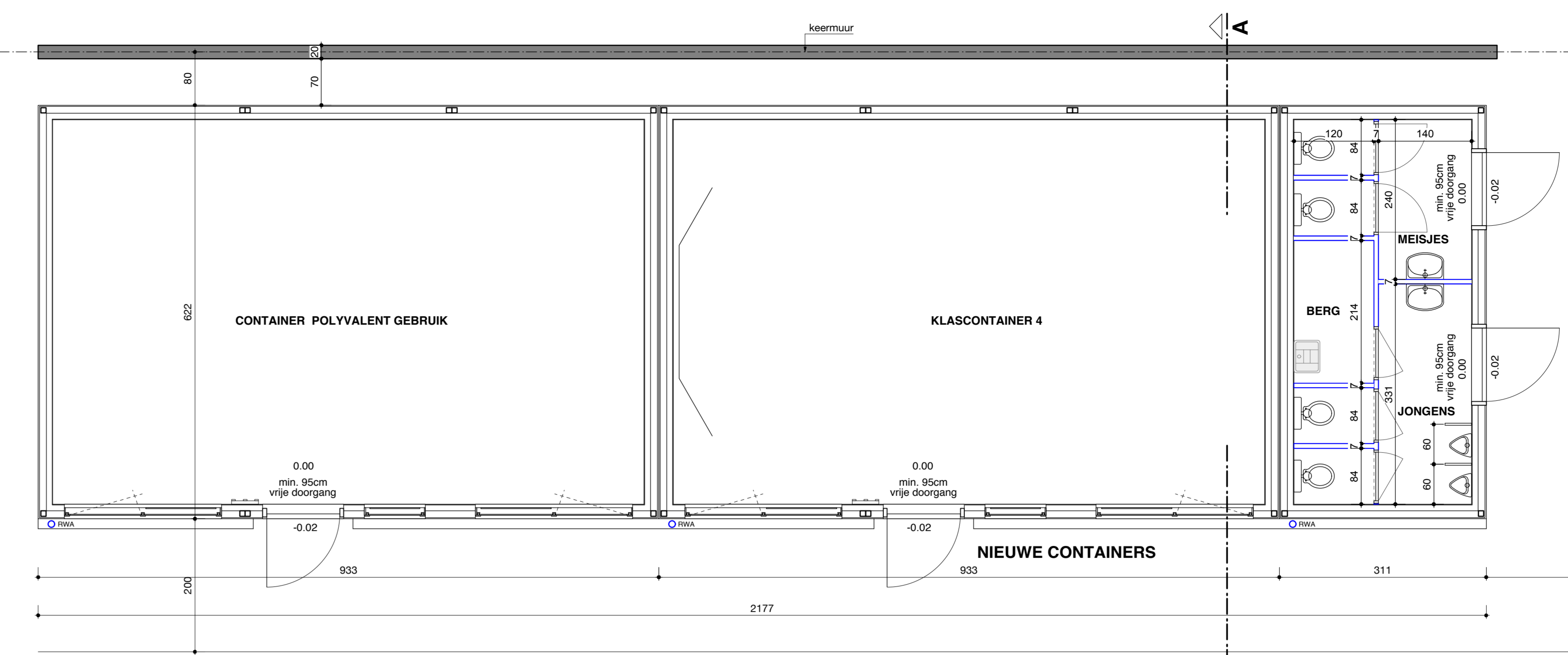
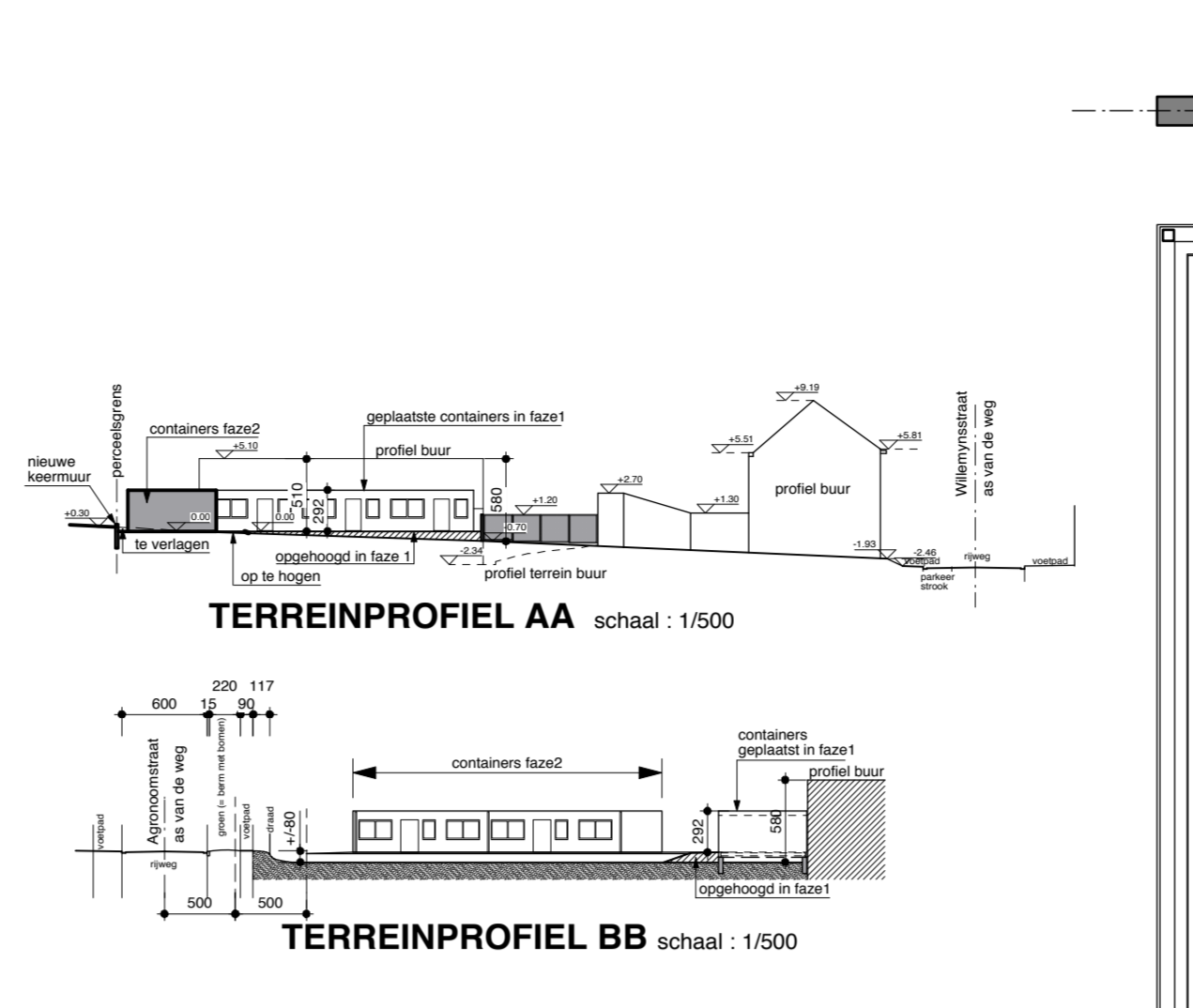
SNEDE A LUIFEL schaal 1:100



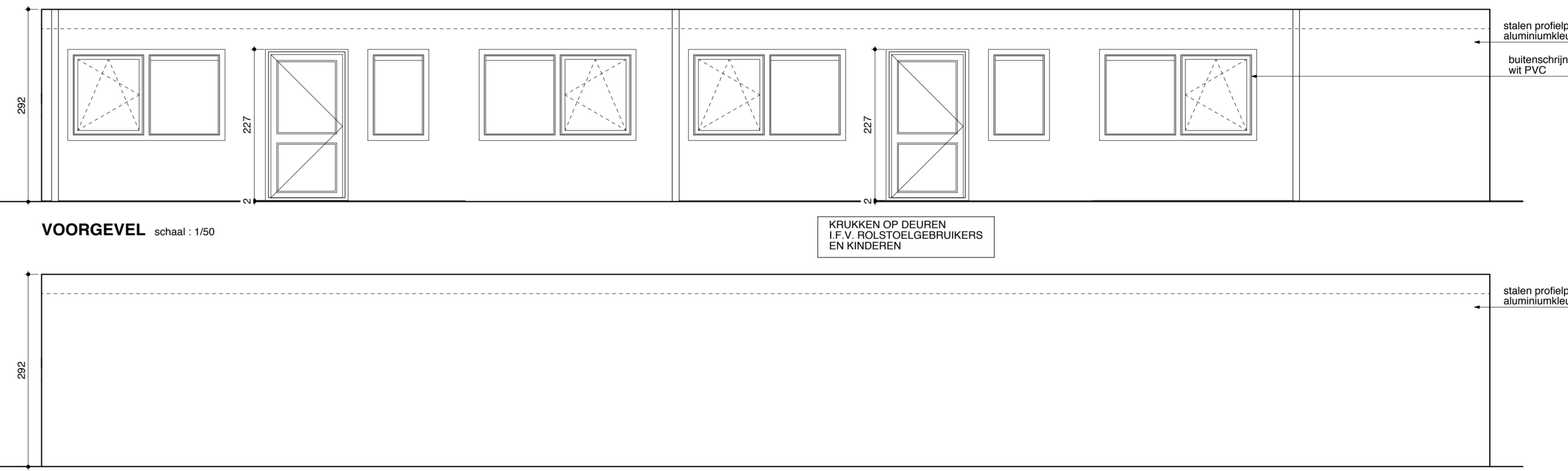
ZIGEVEL LINKS schaal 1:100

SNEDE AA schaal 1:100

ZIGEVEL RECHTS schaal 1:100

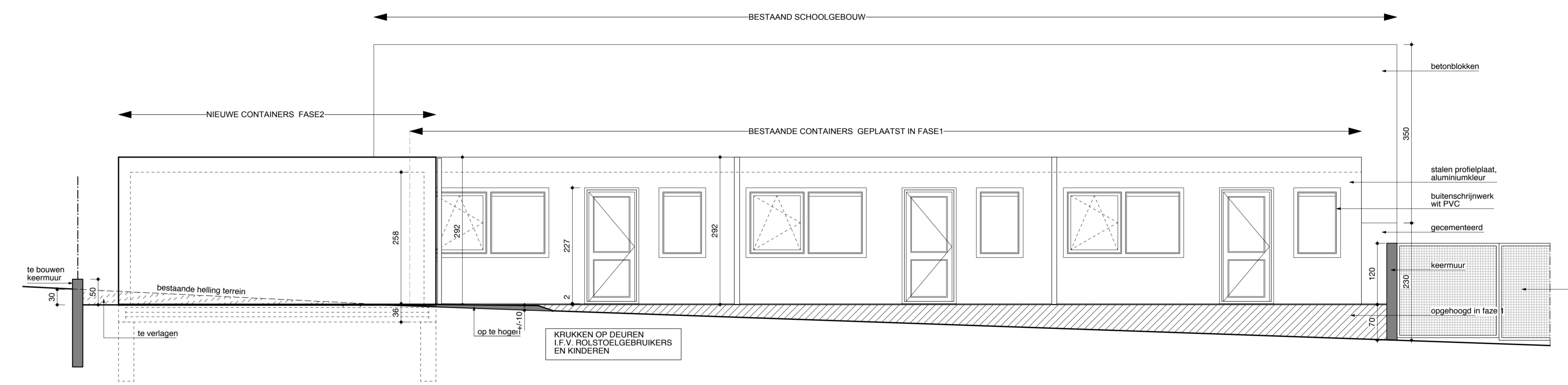


GRONDPLAN GELUIKvloERS schaal 1:50

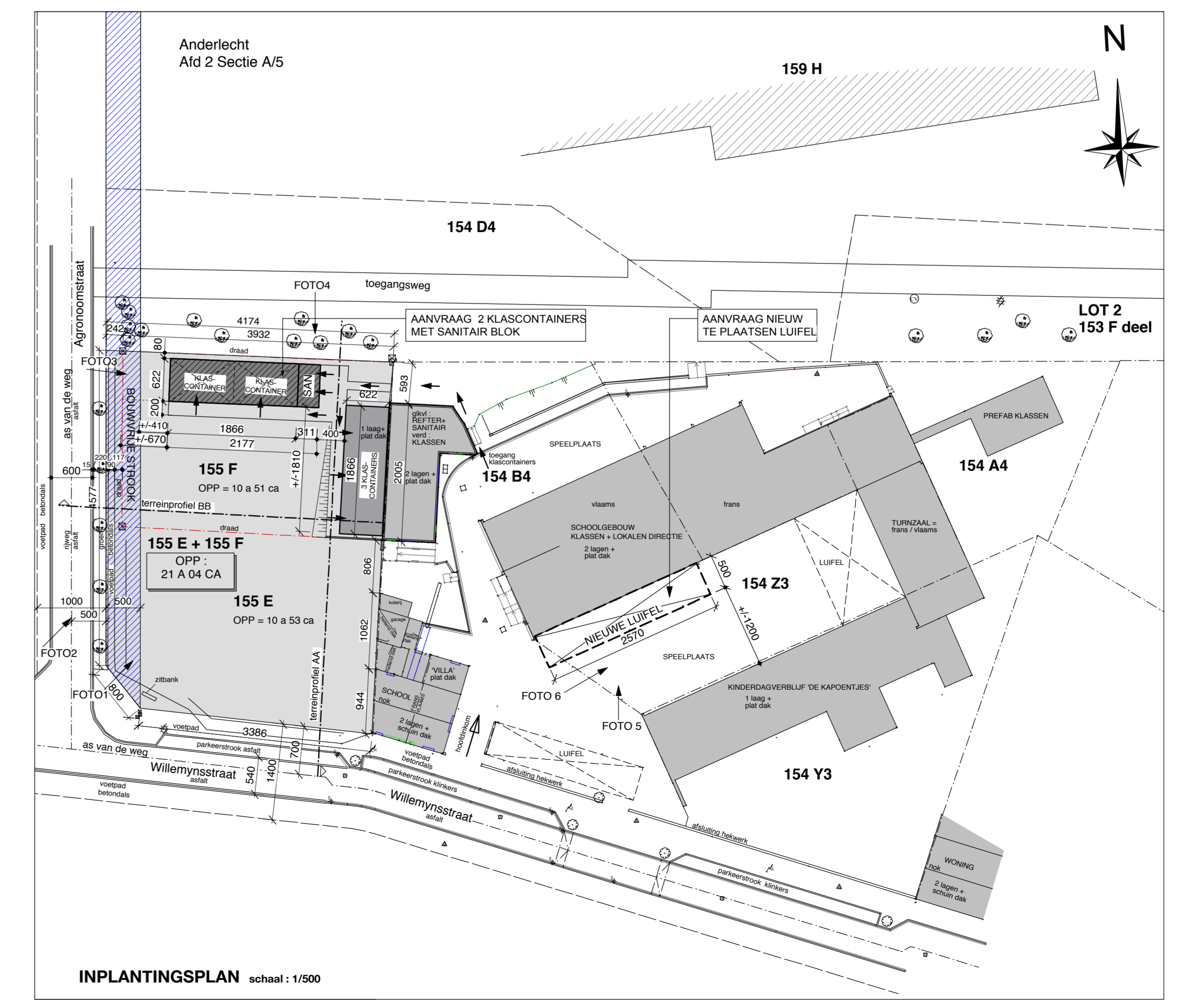


VOORGEVEL schaal 1:100

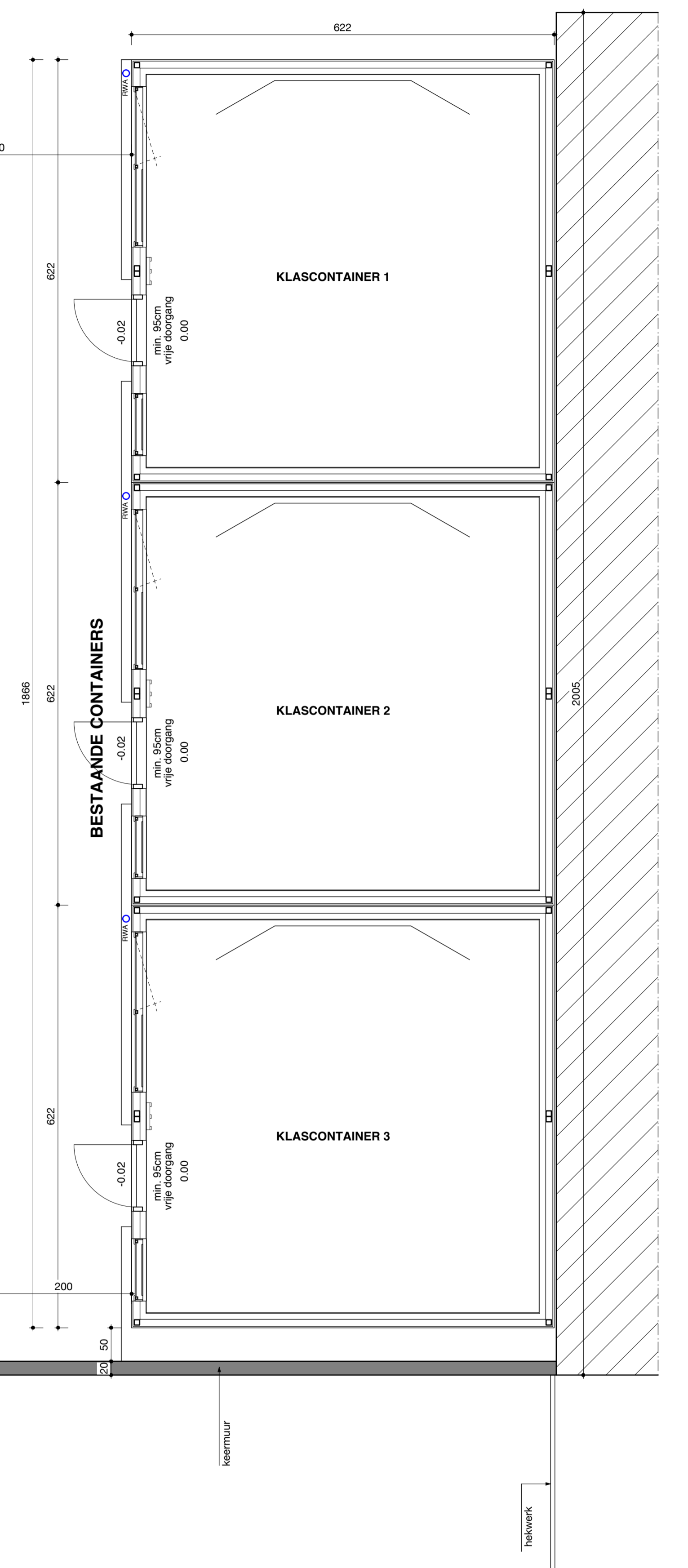
ACHTERGEVEL schaal 1:100



ZIGEVEL schaal 1:100



INPLANTINGSPLAN schaal 1:1000



BESTAANDE CONTAINERS

|   |  |                     |
|---|--|---------------------|
| <b>UITBREIDEN VAN SCHOOLGEBOUW MET 2 KLASCONTAINERS MET SANITAIR BLOK + PLAATSEN VAN EEN NIEUWE LUIFEL</b>  |  | <b>15.263</b>       |
| OPDRACHTGEVER   | WVBA 100<br>RESERVAESTRAAT 61<br>1070 ANDERLECHT-BRUSSEL   | 1000-ANNOOIO        |
| BOUWPLAATS  | VRIJE BASISSCHOOL REGINA ASSUMPTA<br>WILLEMSSTRAAT 21-212<br>1070 ANDERLECHT-BRUSSEL<br>AREA: 6000 m², VLO. 1500, 1500-21 tot 154-14                         | DATUM               |
| <b>PLAN, FUNDING-RIOLERING, SNEDE GEVELS, TERREINPROFIELEN, INPLANTINGSPLAN, OMGEVINGS- EN LIGGINGSPLAN</b> |  |                     |
| ONTWERPER   | CATHERINE DE BIE ARCHITECTEN BVBA<br>STREVENHOEDERSTRAAT 21-212<br>1070 ANDERLECHT-BRUSSEL<br>TELEFON: 02 261 144 21-212<br>WWW.CATHERINEDEBIEARCHITECTEN.NL | OPDRACHTGEVER       |
| CONTOERPLAN   | OPDRACHTGEVER  | DATUM               |
| LEGENDE   | WIJZIGINGEN  |                     |
|   | A  |                     |
|   | B  |                     |
|   | C  |                     |
|   | D  |                     |
|   | E  |                     |
|   | F  |                     |
|   | G  |                     |
|   | H  |                     |
| SCHAAL: 1:100-1:1000-1:2500-1:5000  | DATUM: 2018-05-18  | <b>BOUWAANVRAAG</b> |
|   |  | <b>1.01</b>         |